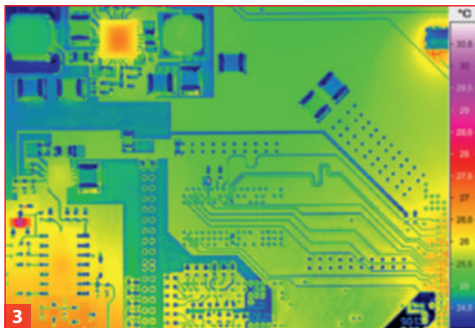
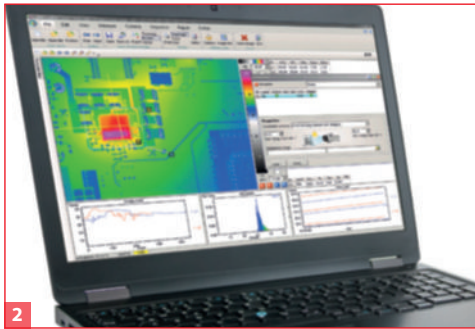


ImageIR® 7300

High-end Thermography Camera

INFRAtec.

Europe's leading specialist for infrared sensors and measurement technology



- 1) ImageIR® 7300
- 2) Software IRBIS® 3
- 3) Circuit board

Cooled FPA photon detector with (640 × 512) IR pixels
Frame rate up to 1,200 Hz, GigE Vision compatible
Snapshot detector, internal trigger interface
Extremely short integration times in the microsecond range
Pixel size up to 2 µm
Thermal resolution better than 0.02 K



www.InfraTec.eu

www.InfraTec-infrared.com

Made in Germany



Spectral range	(2.0 ... 5.7) μm
Pitch	15 μm
Detector	MCT or InSb
Detector format (IR pixels)	(640 \times 512)
Image acquisition	Snapshot
Readout mode	ITR / IWR
Aperture ratio	f/3.0 or f/2.0
Detector cooling	Stirling cooler
Temperature measuring range	(-40 ... 300) $^{\circ}\text{C}$
Measurement accuracy	$\pm 2^{\circ}\text{C}$ or $\pm 2\%$
Temperature resolution @ 30 $^{\circ}\text{C}$	MCT: Better than 0.02 K InSb: Better than 0.025 K
Frame rate (full / half / sub frame)*	MCT: Up to 75 / 300 / 1,200 Hz InSb: Up to 100 / 326 / 863 Hz
Window mode	Yes* (full frame / sub frame)
Focus	Manual
Dynamic range	14 bit
Integration time	(1 ... 20,000) μs
Rotating filter wheel*	Up to 5 positions
Rotating aperture wheel*	Up to 5 positions
Interfaces	GigE, HDMI*
Trigger	1 IN / 1 OUT, TTL
Tripod adapter	1/4" and 3/8" photo thread, 2 \times M5
Power supply	24 V DC, wide-range power supply (100 ... 240) V AC
Storage and operation temperature	(-40 ... 70) $^{\circ}\text{C}$, (-20 ... 50) $^{\circ}\text{C}$
Protection degree	IP54, IEC 60529
Dimensions; weight	MCT: (235 \times 120 \times 160) mm* InSb: (241 \times 120 \times 160) mm* 3.3 kg (without lens)
Analysis and evaluation software	IRBIS® 3, IRBIS® 3 view, IRBIS® 3 plus*, IRBIS® 3 professional*, IRBIS® 3 control*, IRBIS® 3 online*, IRBIS® 3 process*, IRBIS® 3 active*, IRBIS® 3 mosaic*, IRBIS® 3 vision*

* Depending on model

Those, who are looking for a powerful thermographic camera to solve fundamental measurement and testing tasks in the fields of industry and science, that offers an impressive geometrical resolution will find the ImageIR® 7300 a perfect match. Its cooled **focal-plane array photon detector provides (640 \times 512) IR pixels** and a **pitch of 15 μm** at a constant active detector area. Users, who are testing very small structures on large-scale measurement objects, benefit from substantial plus in terms of efficiency compared to smaller detector formats. In addition, you can choose between **MCT and InSb** detectors.

The camera supports **recording and storing images and sequences with frequencies up to 1,200 Hz**. An internal trigger interface guarantees for precise, repeatable triggering of correspondingly fast processes. Two respective inputs and outputs are used to control the camera or to generate digital control signals for external devices. Depending on the character of the measurement and testing situation due to its modular design, most diverse thermographic software and high-quality lenses the ImageIR® 7300 is quite easy to adapt to the on-site conditions.

Lenses	Focal length (mm)	FOV ($^{\circ}$)	IFOV (mrad)
Wide-angle lens	12	(43.6 \times 35.5)	1.3
Standard lens	25	(21.7 \times 17.5)	0.6
Telephoto lens	50	(11.0 \times 8.8)	0.3
Telephoto lens	100	(5.5 \times 4.4)	0.15
Telephoto lens	200	(2.7 \times 2.2)	0.08

Macro and Microscopic lenses	Minimum object distance (mm)	Object size (mm)	Pixel size (μm)
Close-up for telephoto lens 50 mm	300	(58 \times 46)	90
Close-up for telephoto lens 100 mm	500	(48 \times 38)	75
Microscopic lens M = 1.0 \times (3 versions)	40 / 195 / 300	(9.6 \times 7.7)	15
Microscopic lens M = 3.0 \times	22	(3.2 \times 2.6)	5
Microscopic lens M = 8.0 \times	14	(1.2 \times 1.0)	1.9

Headquarters

InfraTec GmbH
Infrarotsensorik und Messtechnik
 Gostritzer Str. 61 – 63
 01217 Dresden / GERMANY
 Phone +49 351 82876-610
 Fax +49 351 82876-543
 E-mail thermo@InfraTec.de

USA office

