

## YOKOGAWA DAQ Connection Quick Guide

2023/01 ver.01

This document describes how to synchronize a camera with Yokogawa Test & Measurement Corporation DAQ and to measure waveform.

For more details about camera, refer to each manual attached to the FASTCAM.



- Read "FASTCAM First Step Guide" before using.
- To connect YOKOGAWA DAQ to a PC, a USB driver (YKMUSB) is required.  
Download and install it from the Yokogawa Measuring Corporation website.
- Mini CX is not supported.

### DAQ Setup

#### 1 Setup

Click the [Simple/Enhanced] button.  
Make the settings as shown right.

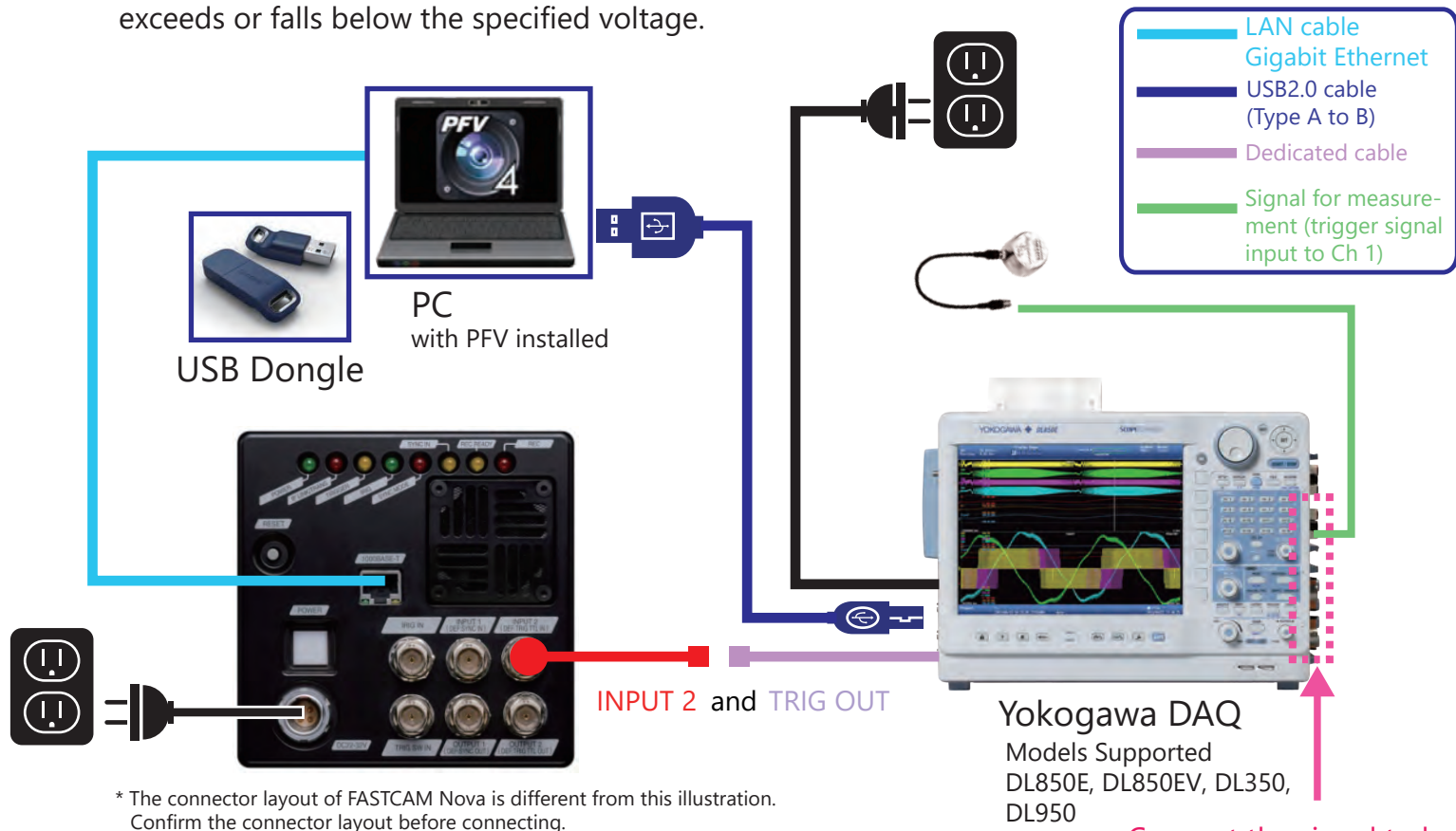


Setting	Simple
Source	CH 2
Slope	Rising or falling edge depending on input signal
Level	Start/Stop Judgment Voltage
Hold Off	0.00 $\mu$ sec

### Device connection for using Level trigger [Case A]

What is "Level trigger" ?

This is to start/stop measuring waveform data when the reference signal input to a DAQ exceeds or falls below the specified voltage.



Connect the signal to be measured to Ch 2 ~

### Caution

- Note that the withstand voltage of DL DAQ varies depending on the module.
- For detailed settings of the DL DAQ unit, refer to the DL DAQ manual or contact Yokogawa Corporation.
- Center, End, and Manual triggers are available.

### Note

For SA-Z and others with composite IO cables, connect INPUT2 as TRIGGER TTL IN and OUTPUT1 as GENERAL OUT1.

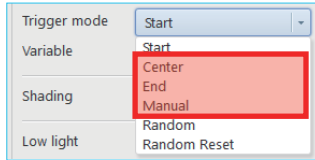
## Configuration on PFV4

### 1 Trigger mode setting

Make the trigger mode setting before configuring DAQ settings.  
The supported trigger modes are "Center", "End", and "Manual".

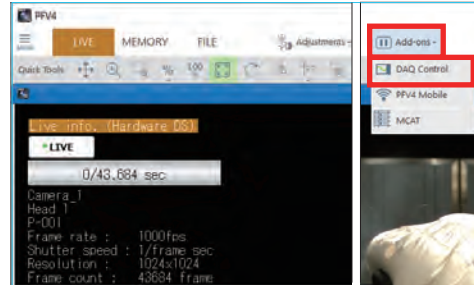
#### Caution

When using manual trigger mode, the number of frames before trigger should be set to 2 or more.



### 2 [DAQ Device Select] window

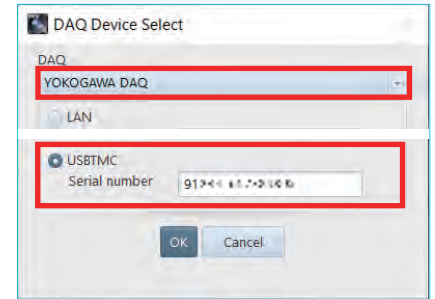
Click [Add-ons] - [DAQ Control].  
If the connection is not made correctly, [Add-ons] - [DAQ Control] will not appear in the MENU.  
Check if the dongle is connected and recognized correctly.



### 3 Device selection

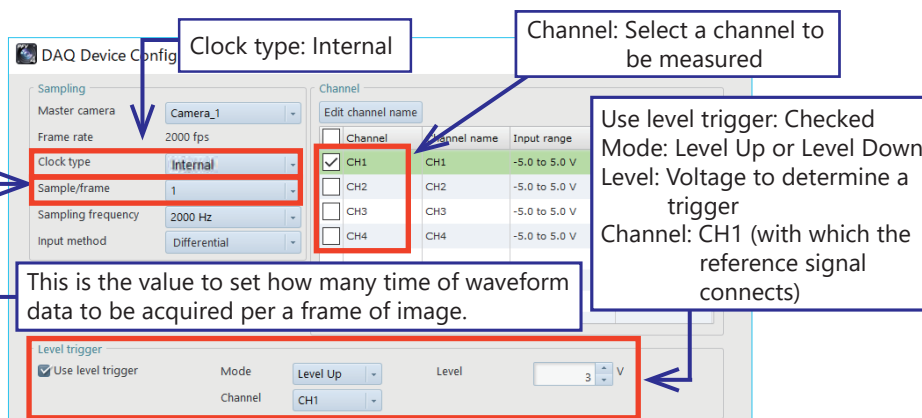
Select "YOKOGAWA DAQ" and "USBTCM" on the [DAQ Device Select] window, enter the serial number beginning with "91", and click the [OK] button.

\* This operation is required only for the first connection.



### 4 Make device settings

[DAQ Device Configuration] window appears.  
Make the settings as shown below and click the [OK] button.

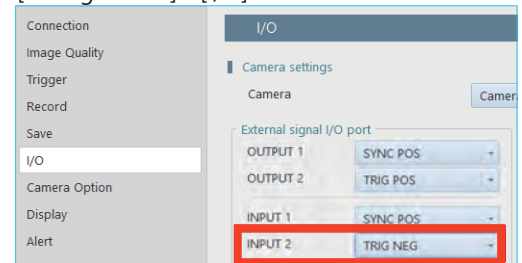


### 5 DAQ State Monitoring

The [DAQ State Monitoring] window appears.  
This window is for monitoring the DAQ status, not for starting recording.

### 6 I/O Setting

Set [INPUT 2] as "TRIG NEG" from [MENU] - [Configuration] - [I/O].



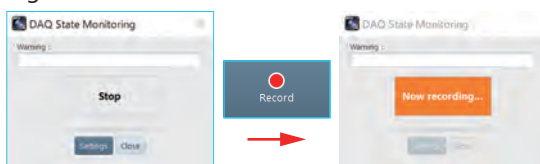
## Recording

### 1 Set recording conditions

Adjust focus of lens, aperture, and set recording conditions.  
Refer to PFV4 User's Manual for the detailed setting.

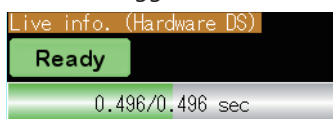
### 2 Click the [Record] button

Click the [Record] button on Recording/Playback panel.  
The DAQ State Monitoring panel changes and the endless recording starts.



### 3 Input trigger

Confirm the first half of recording has been done.  
Input voltage to the data logger.



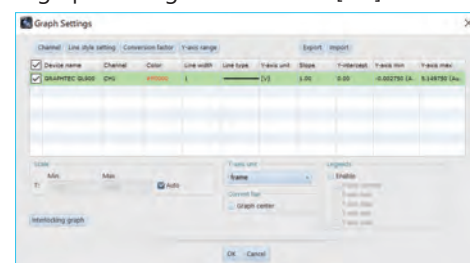
#### Caution

- If the recording does not finish, check the points below:
1. Is the connection right?
  2. Are the level and channel matched?
  3. Was the recording interrupted by clicking the [Stop] button before recordable time expired?

## Playback/Saving

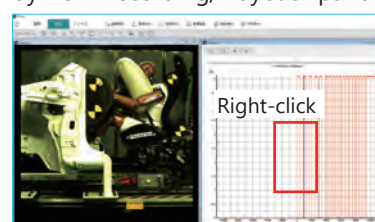
### 1 Make the graph settings

When the recording is finished, the screen moves from live to memory.  
Click the [Graph] button, then [Graph Settings] window appears.  
Configure the graph settings and click the [OK] button.



### 2 Click the [Play] button

After setting the graph, the recording result and the graph are shown.  
Play from Recording/Playback panel and check the recorded result.



- To set the center position of the graph, follow the steps below.
1. Right-click on the graph window.
  2. Click [Graph Settings].
  3. Check the "Graph center" checkbox in the "Current bar" column.

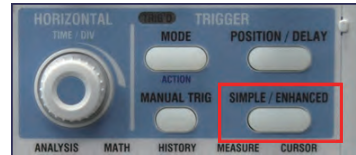
### 3 Save data

Click the [Save] button, and specify Save location, File name and Save format. Click the [Save] button to save the data to PC.

## DAQ Setup

### 1 Setup

Click the [Simple/Enhanced] button.  
Make the settings as shown right.

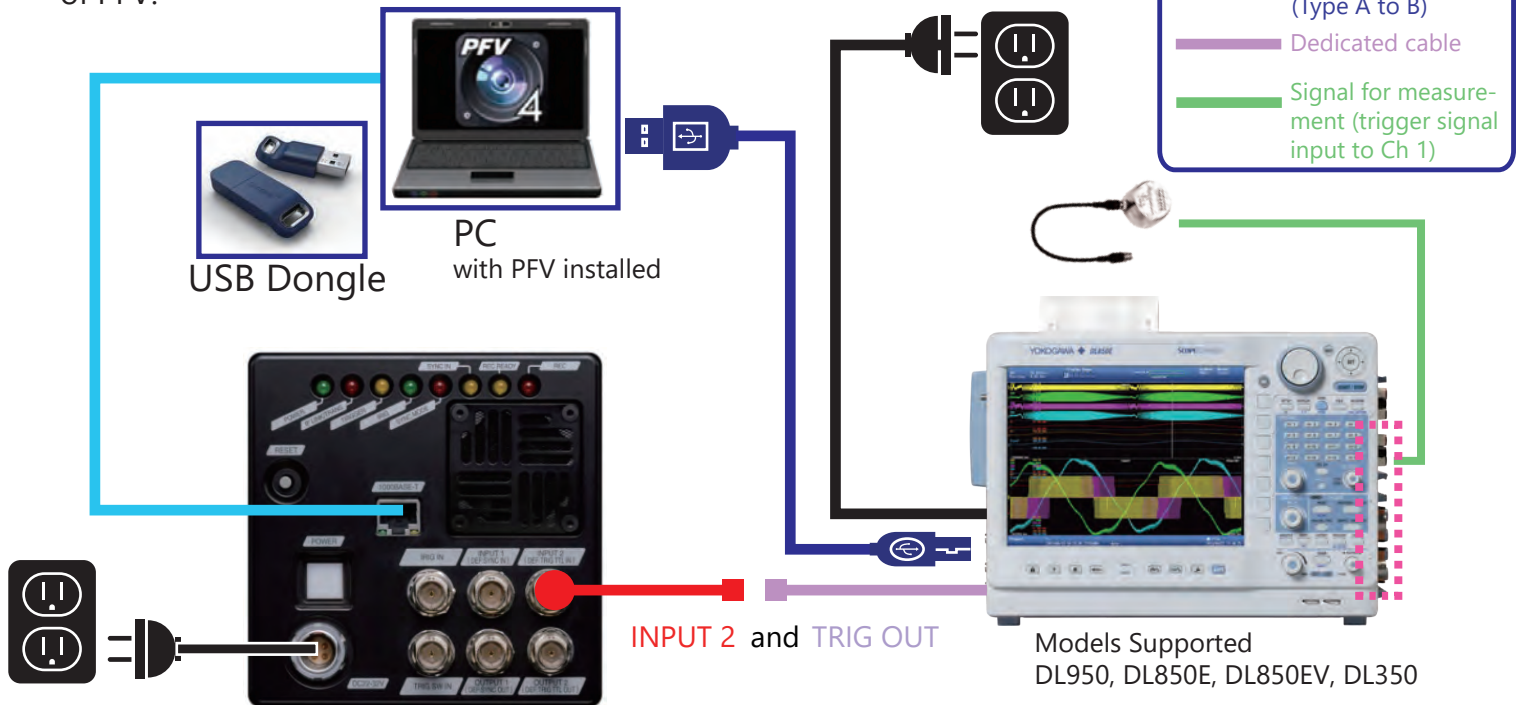


Setting	Simple
Source	External
Slope	Rising edge
Hold Off	0.00 $\mu$ sec

## Device connection for using Manual trigger [Case B]

What is "Manual trigger" ?

This is to start measuring waveform data by clicking the [Record] button of PFV.



\* The connector layout of FASTCAM Nova is different from this illustration.  
Confirm the connector layout before connecting.

### Caution

- In advance, install the DAQ driver bundled with DAQ.
- Disconnect a USB cable between PC and DAQ before changing the setting of DAQ.
- As the trigger mode, "Center", "End", and "Manual" can be used.
- Make sure to use a USB2.0 Type A to B cable for connecting PC and DAQ.

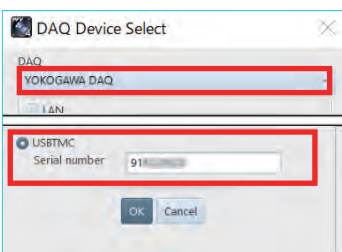
## Configuration on PFV4

### 1 Trigger mode setting

Make the trigger mode setting before configuring DAQ settings.  
The supported trigger modes are "Center", "End", and "Manual". **When using manual trigger mode, the number of frames before trigger should be set to 2 or more.**

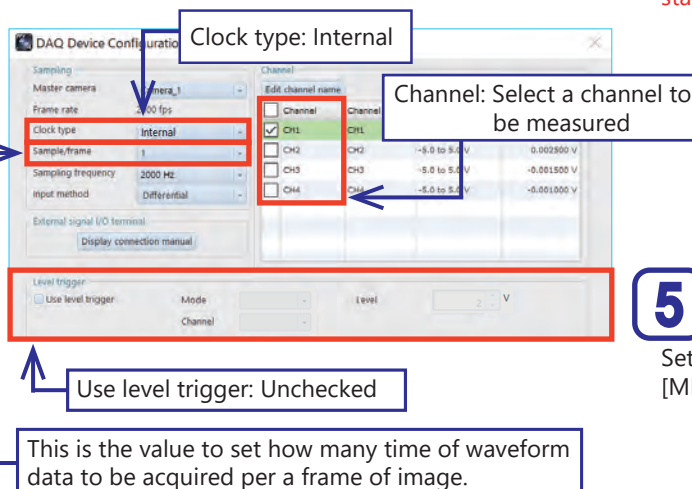
### 2 Device selection

Select "YOKOGAWA DAQ" and "USBTMC" on the [DAQ Device Select] window, enter the serial number beginning with "91", and click the [OK] button.



### 3 Make device settings

[DAQ Device Configuration] window appears.  
Make the settings as shown below and click the [OK] button.



### 4 DAQ State Monitoring

The [DAQ State Monitoring] window appears.

**This window is for monitoring the DAQ status, not for starting recording.**



### 5 I/O Setting

Set [INPUT 2] as "TRIG NEG" from [MENU] - [Configuration] - [I/O].



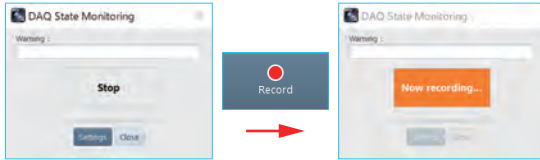
## Recording

### 1 Set recording conditions

Adjust focus of lens, aperture, and set recording conditions. Refer to PFV4 User's Manual for the detailed setting.

### 2 Click the [Record] button

Click the [Record] button on Recording/Playback panel. The DAQ State Monitoring panel changes and the endless recording starts.



### 3 Click the [Ready] button

Confirm the first half of recording has been done. Click the [Ready] button.



### 4 Press the [MANUAL TRIG] button on DAQ

When the display in the lower left corner of the DAQ changes from Pre-Trigger to Waiting for Trigger, press the MANUAL TRIG button.



## Caution

If the recording does not finish, check the points below:

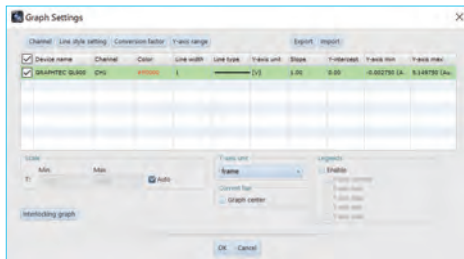
1. Is the connection right?
2. Are the level and channel matched?
3. Was the recording interrupted by clicking the [Stop] button before recordable time expired?

## Playback/Saving

### 1 Make the graph settings

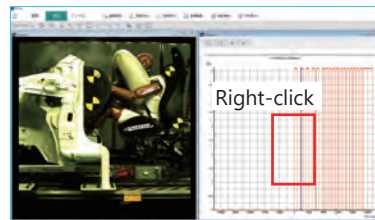
When the recording is finished, the screen moves from live to memory.

Click the [Graph] button, then Graph Settings window appears. Configure the graph settings and click the [OK] button.



### 2 Click the [Play] button

After setting the graph, the recording result and the graph are shown. Play from Recording/Playback panel and check the recorded result.



To set the center position of the graph, follow the steps below.

1. Right-click on the graph window.
2. Click [Graph Settings].
3. Check the "Graph center" checkbox in the "Current bar" column.

### 3 Save data

Click the [Save] button, and specify Save location, File name and Save format. Click the [Save] button to save the data to PC.

## FAQ and Trouble shooting (Refer to PFV4 User's Manual for more details.)

### Q1 What are the frame rates that can be set?

◆The item displayed under Sampling Rate on the DAQ is the supported sampling rate. The frame rate can be set as long as it is an integer multiple of the sampling rate. Follow the procedure below.

DL850E/DL950: Press [Acquire] button and check the "Record Length".

DL350: Check the "Sampling Rate" in the lower of the DAQ window.

### Q2 How do I connect with a LAN cable?

◆Install a HUB or two additional LAN terminals. Make sure that the IP addresses of DAQ and the high-speed camera and PC do not overlap.

### Q3 How can I save the image and graphs side by side?

◆Specify the layout save from the ▼ button next to the Save button.

### Q4 An error appears and hinders the measurement process.

◆Synchronization signal might not be detected as its width is short. Make signal settings following "I/O setting" in this guide. After making the settings, save the setting to the camera from [Camera controls...] - [Save/Load camera control settings] - [Save].

### Q5 It is trouble to wait the completion of the long recording time. Any solution?

◆Setting partition from [MENU] - [Configuration] - [Record] - [Partition] divides the total memory volume of the camera and shortens the recording time.

### Q6 The message "The trigger mode is not supported" appears, and cannot record.

◆Check if the trigger mode is set to any of "Center", "End", or "Manual".  
◆Make sure if "Use level trigger" is checked in the [DAQ device setting] window.

### Q7 Has PFV4 User's Manual more information about operation with data logger?

◆Refer to the [Add-on Functions] - [DAQ Control].